

Magenta Electronics Ltd

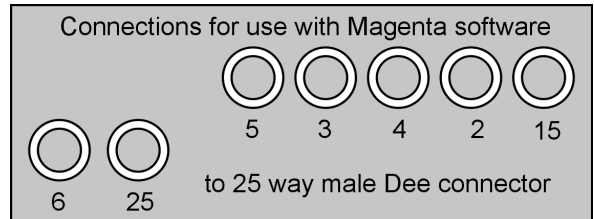
Super PIC programmer - Kit 862 – Software Update

Using the Super PIC programmer with ic-prog software:

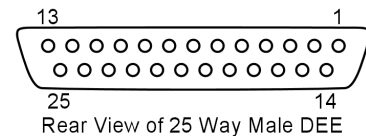
ic-prog is available for download from www.ic-prog.com This software is regularly updated to accommodate new devices, and is a delight to use. An optional driver can also be downloaded so that the programmer runs on Windows XP. In order to work correctly it is necessary to make different connections between the Super PIC programmer pcb, and the 25way dee plug. These changes are detailed in the next section.

Hardware Connections:

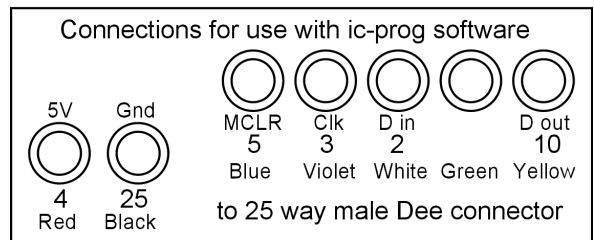
The connections for the original Magenta Software are shown in the grey box. The layout is as viewed from the component side of the Magenta board. The numbers are the 25 Way Male Dee connector pins.



For use with ic-prog make the connections shown in the clear box. Note that 'D in' means data from the computer to the PIC and 'D out' means data read from the PIC to the computer. MCLR is the master clear pin carrying the 13V Vpp programming voltage. The wire marked 'Green' is not connected.



The view of the Male Dee connector is the side to which the wires are soldered.



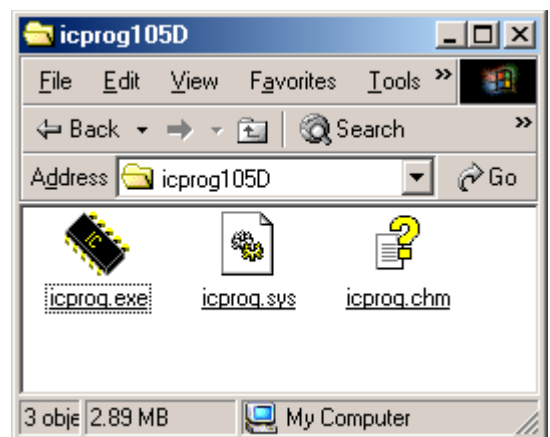
Loading ic-prog:

Connect to www.ic-prog.com and download the latest version. The one shown here is 105D current in Jan 2005.

Unzip icprog.exe into a new directory.

The Help file is downloaded separately and should be unzipped into the same new directory.

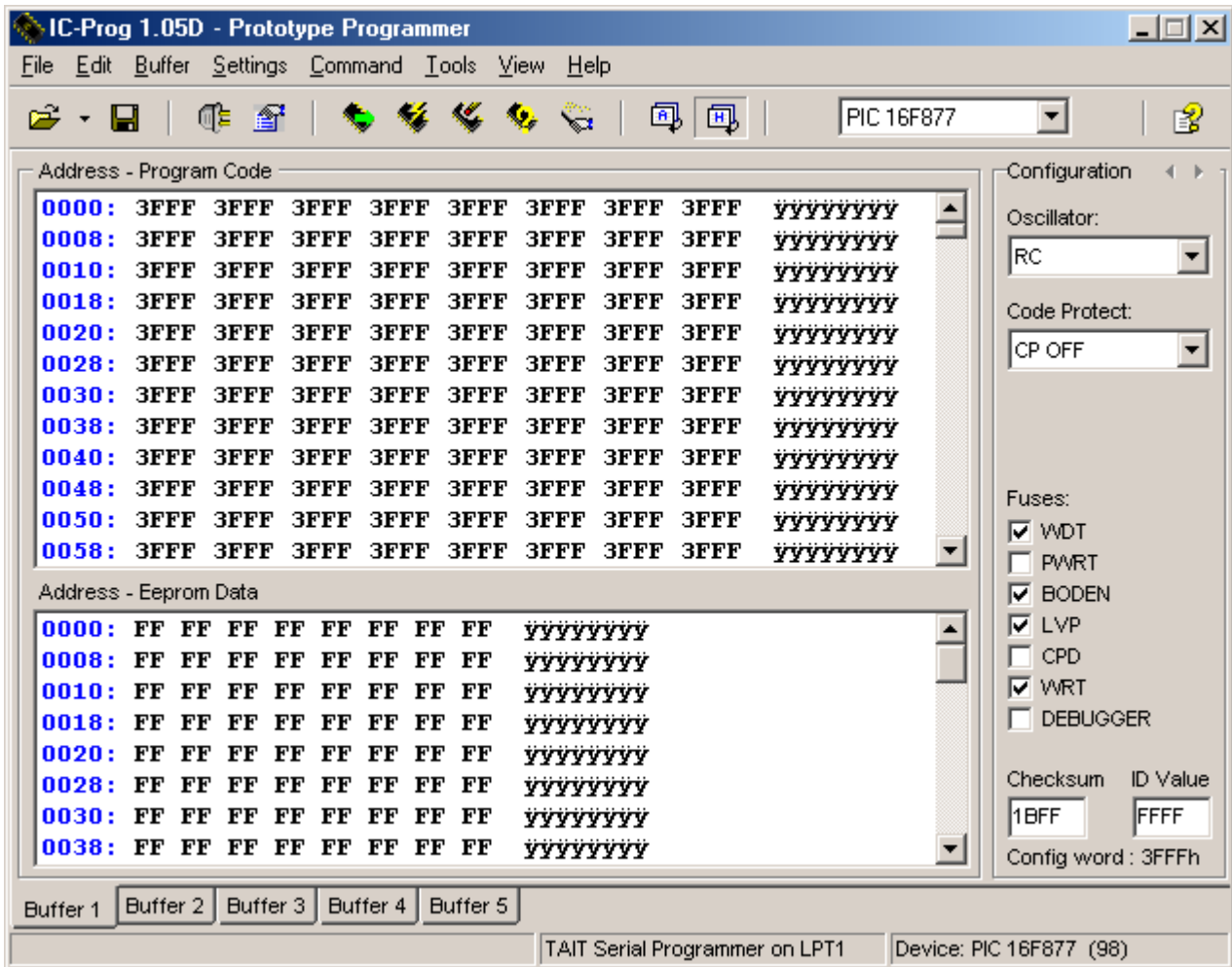
It is also necessary to download a special driver for use with newer Windows versions - this **MUST** be located in the same directory as the unzipped icprog.exe. When this is done you should have a directory looking something like this:



Software settings:

Don't connect the programming hardware until the software has been checked and set up.

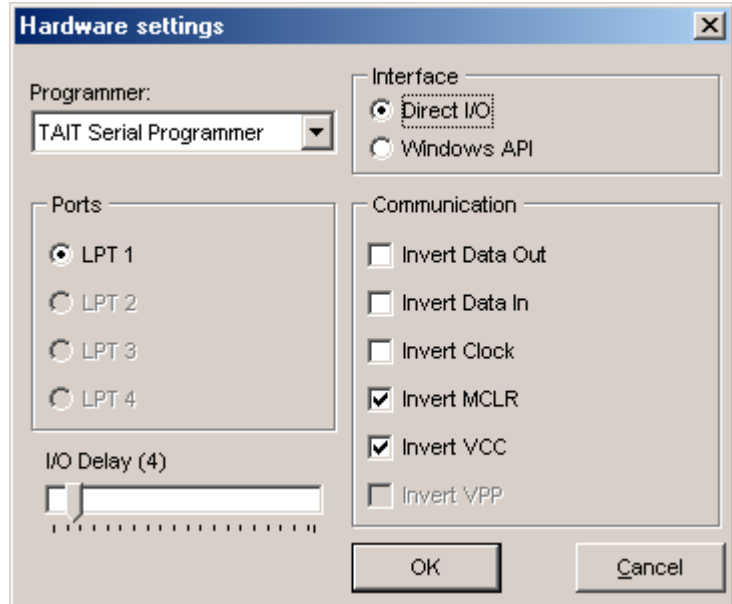
Run icprog.exe and the following screen should appear – except that the selected device will be different, and the bottom line caption will not show the same programmer.



Click on 'Settings' then 'Hardware' and then select the options shown below:

Note that the words 'Serial Programmer' refer to the way the chip is programmed and not to the computer port!

This programmer uses the parallel LPT1 port. If your computer has alternative parallel ports you might prefer to select LPT2 etc.

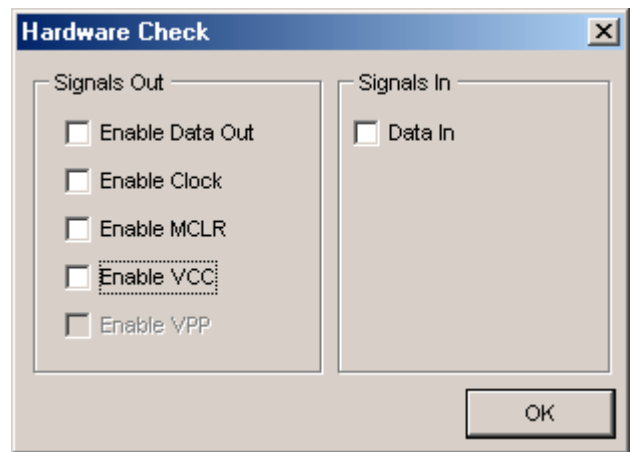


Checking the hardware:

It is assumed that the programmer has been assembled and tested according to the Magenta instructions so that the switching of the 5V and 13V supplies is working correctly with the correct indicator leds operating

Return to the main program, connect and turn on the programmer. Select 'Settings' then 'Hardware Check' it should be possible to switch on the 5V and 13V supplies by 'checking' the 'Enable VCC' and 'Enable MCLR' boxes.

'Enable clock' will change the voltage on pin 12 of the 18 pin programming socket from 0 to 4 Volts or so. Similarly 'Enable Data Out' will alter the voltage on pin 13 and will be read back and followed by the 'Data in' box.



If this doesn't work correctly, recheck all of the software settings, check the connector and board wiring, and use a multimeter to check over the programmer board (whilst it is disconnected from the computer).

It is also useful to check that the computer is driving the port correctly just by measuring the incoming signals from the computer lead with the programmer power turned off.

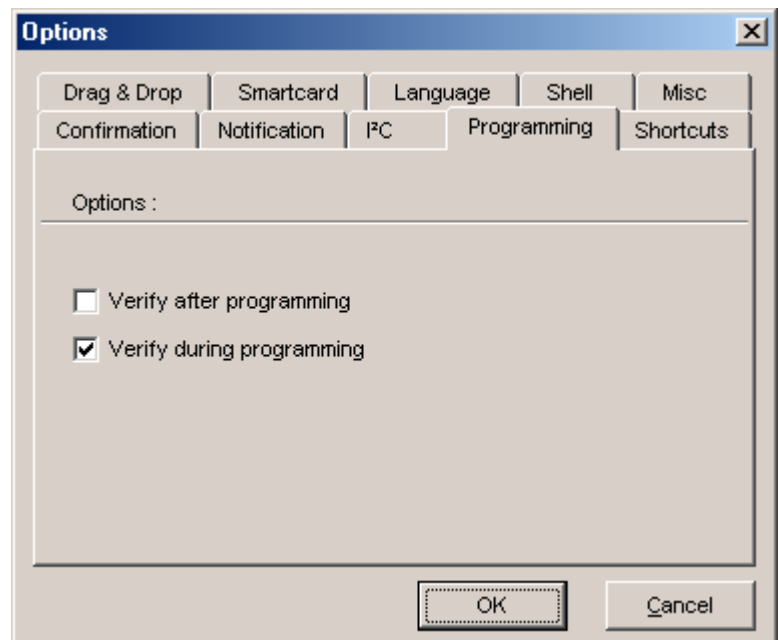
In Use:

For many useful features: Click 'Settings' and then 'Options'.

'Verify during programming' is useful when a number of chips are being programmed with with 'Code protection ON' as it checks the program before setting 'Cp'.

Setting 'Select Device from file' under the 'Misc' tab enables the programmer to select the correct chip type when a file is loaded – provided it has previously been saved from ic-prog.

Drag & Drop is a very convenient way to load new files.



www.ic-prog.com is a lively well managed site with many links and a wide range of contributors.

Magenta Electronics Ltd.
135 Hunter Street
Burton on Trent
Staffs
DE14 2ST
Tel 01283 565435
Fax 01283 546932
sales@magenta2000.co.uk
www.magenta2000.co.uk

